

How can we promote place-based climate resilience?



**Sustainability Charity based at the Edinburgh
Climate Change Institute**

Pioneering place based climate resilience

Focus on systems change and transformation

@SnifferScotland

www.sniffer.org.uk



Adaptation Scotland

supporting climate change resilience



TalX

Transboundary
Adaptation
Learning Exchange

ClimateReadyClyde

@SnifferScotland

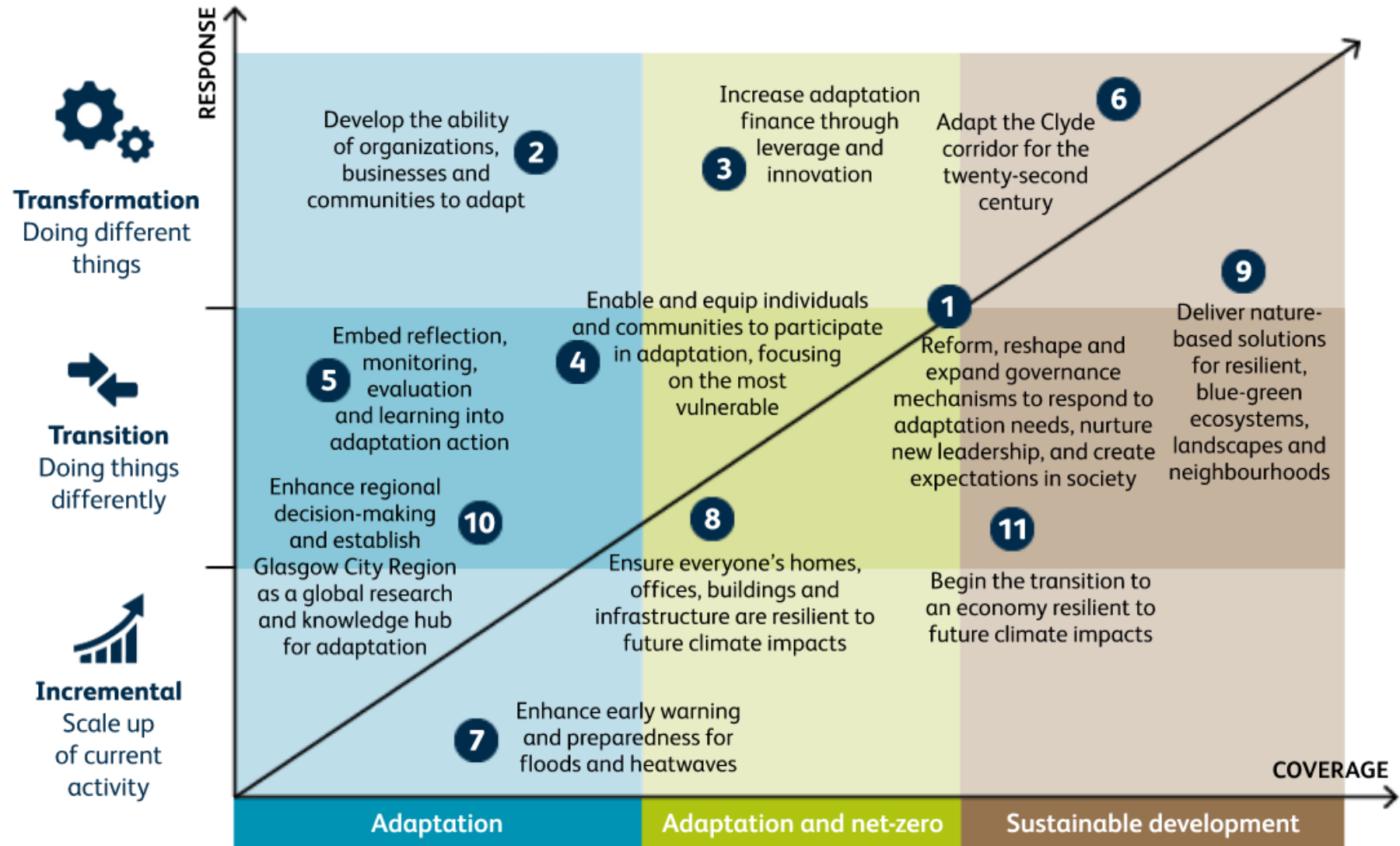
www.sniffer.org.uk

 **sniffer**
knowledge brokers
for a resilient Scotland





Transformational adaptation, accelerated by systems level innovation



Click on each of the Interventions for further information.



Increased the resilience
of over **140,000** of the
region's most vulnerable
people to the impact
of climate change



Closed the region's
adaptation finance gap
of **£184 m.** a year



Involved **125** new
organisations, community
groups and businesses
supporting Glasgow
City Region to adapt

Climate Ready Clyde Strategy and Action Plan

<http://climatereadyclyde.org.uk/adaptation-strategy-and-action-plan/>

**Capability maturity
model for place
based adaptation**

**Community of
practice**



TalX

Transboundary
Adaptation
Learning Exchange

Thank you

Anna Beswick

Business Manager/ Adaptation Scotland Programme Manager

anna@sniffer.org.uk